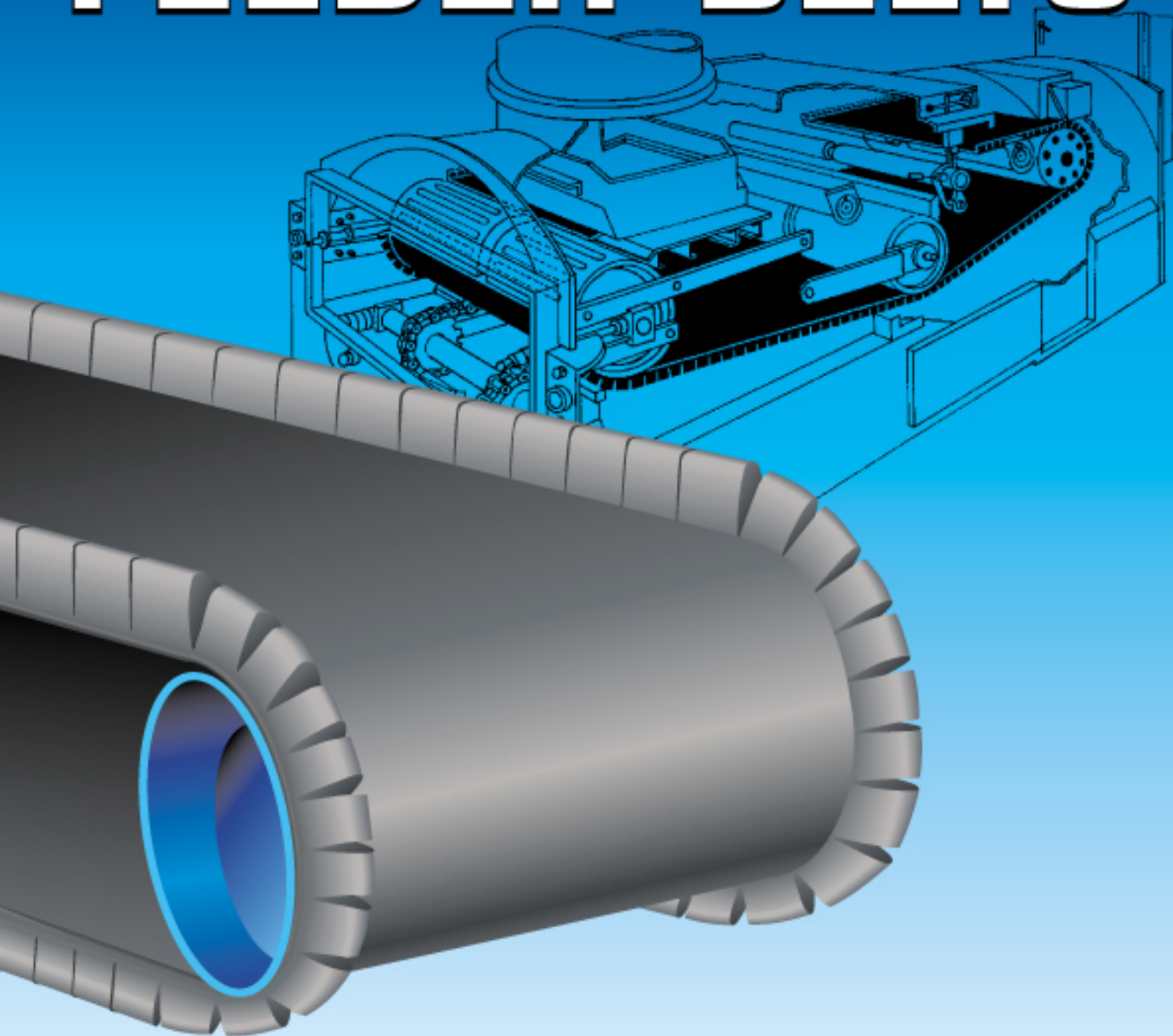


From North America's Largest and Most Experienced Belting Fabricator

FEEDER BELTS



Beltservice Corporation

Beltservice Feeder Belts

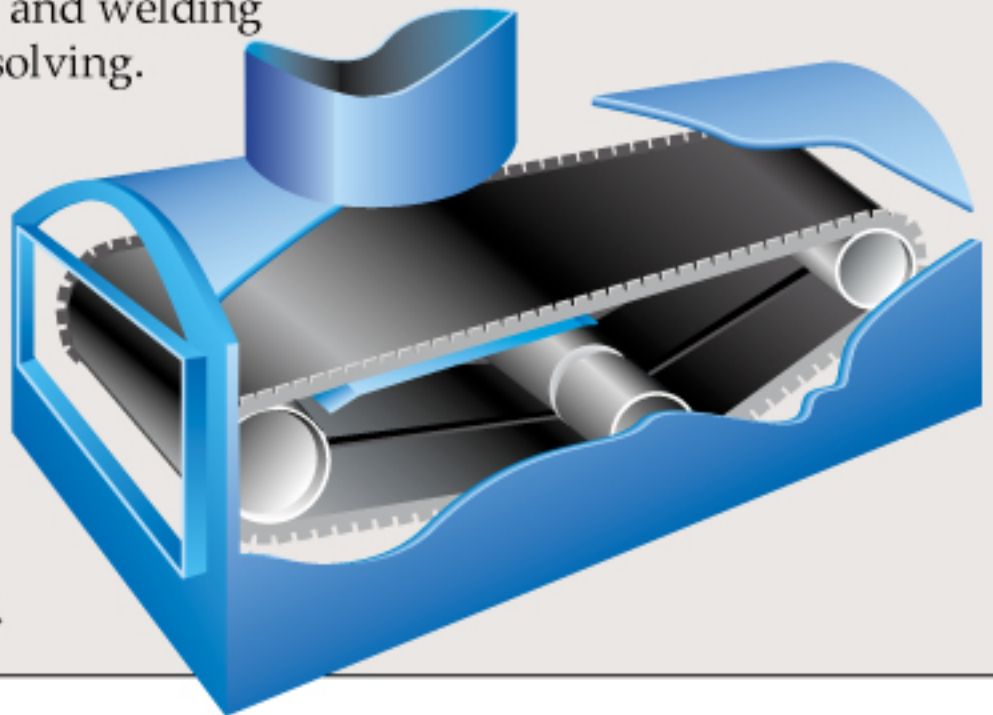
QUALITY AND INNOVATION FROM THE LEADER IN FABRICATED CONVEYOR BELTING

Whatever your bulk feeding requirements, Beltservice Corporation has a belt to help keep your feeder application flowing smoothly. We can fabricate most any type of feeder belt – flat, flanged, V-guided, cleated, etc., and we carry belts for many of the most popular machines in stock!

Our flat belt inventory is one of the deepest in the country, with **more than 200 specifications in stock!**

Beltservice's flanged belt fabrication expertise includes everything from special compounds to innovative hot bonding and welding techniques to problem solving.

We have over 30 years experience in fabricating flanged belts to increase conveyor capacity and help prevent product spillage for all types of industries – from food handling to coal-fired power plants.



When You Must Have:

- Precision Weighing
- Excellence in Material
- Immediate Availability
- Greater Dependability
- Excellence in Workmanship
- Field Experts
- Hassle-Free Installation
- Decreased Inventory
- Technical Support

Call The Leader: *Beltservice Corporation*

Flanges and V-guides

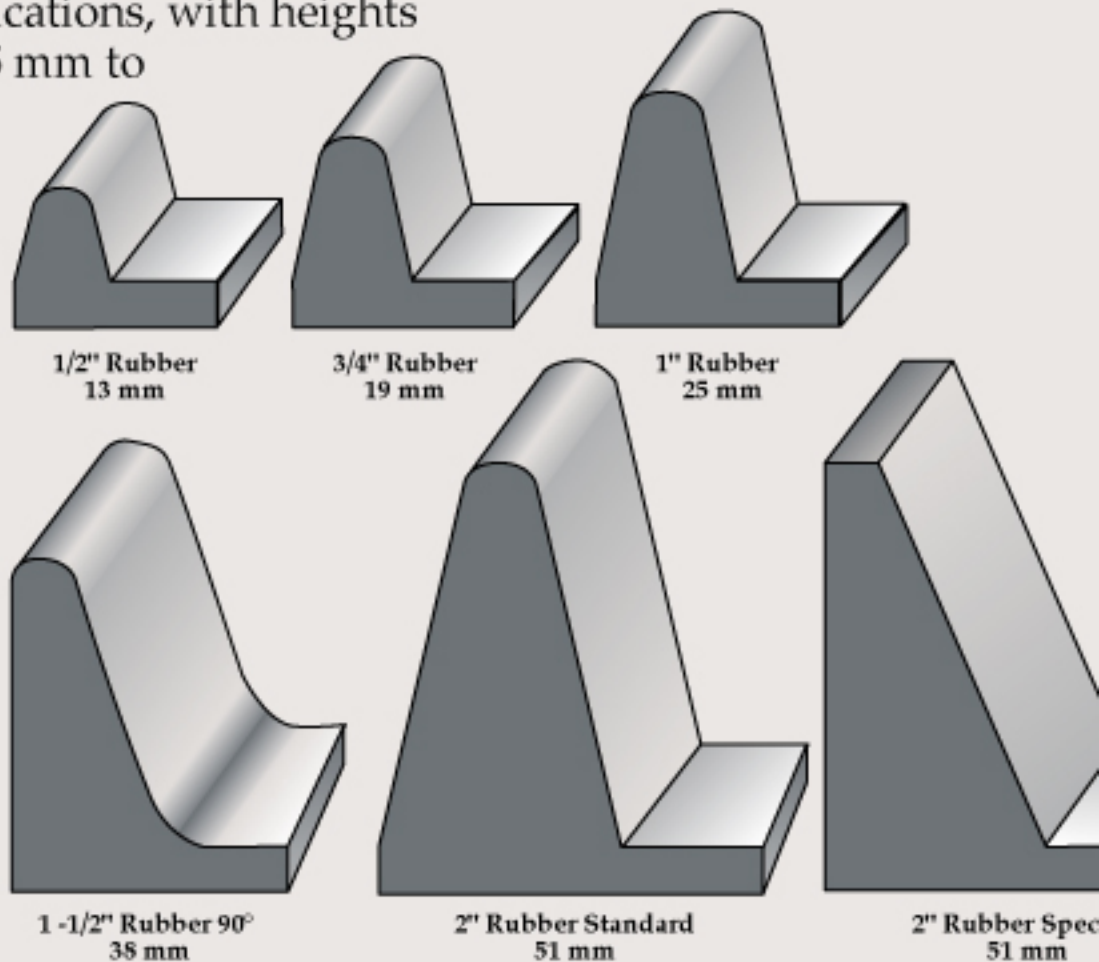
Beltservice offers a tremendous variety of flange shapes and compounds to custom tailor each belt for its particular application. Bottom V-guides are also available to help minimize tracking problems with these belts, which often operate on short centers.

Flange Compounds

Flanges of various sizes are available in rubber, PVC, and urethane. Special rubber flanges are compounded for high temperature applications and those situations where the belt will come into contact with oil. A unique problem-solving flange is our 40 durometer rubber flange. This soft, flexible flange will operate on small diameter pulleys as well as flex upwards! This is useful in feeding applications requiring a change in elevation. PVC is an economical alternative to rubber flanges in some applications, with heights from 1 to 4 inches (25 mm to 102 mm). Urethane flanges are available for those super-rugged applications.

Profiles

We have several flange shapes to help increase conveyor capacity while decreasing material spillage. Our most common rubber flange shapes are shown.

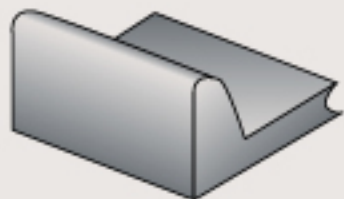


V-Guides

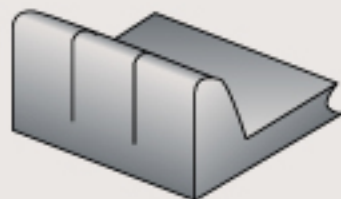
Feeder performance can often be improved by adding a V-guide to the bottom side of the belt. Proper V-guide installation helps eliminate uneven belt tension and excess wandering. We fabricate thousands of feet of V-guided belt each year.

Flange and V-Guide Options

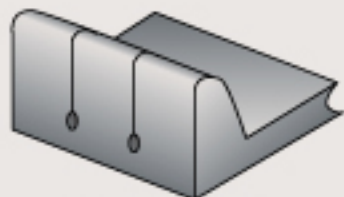
Flanges



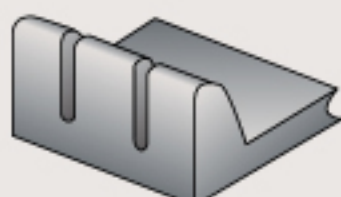
Solid



Siped



Drilled and Siped



Notched

There are four options available to help a flanged and/or V-guided feeder belt operate on smaller-diameter pulleys:

Siping (also called slitting) involves slitting the flange down to the surface of the base belt. This allows the outside edge of the flange to expand as the belt navigates the pulley, decreasing the stress on the flange.

Drilling and Siping is similar to siping, except that a relief hole is drilled at the belt surface.

Notching is the most effective method of relieving stress on a flanged belt. A notch with a radius allows the flange to most easily negotiate the curvature of the pulley or weigh span. When accuracy is your top priority, this style flange offers the precision necessary for weighing.

V-Guides

V-guides can also be modified to more efficiently operate on smaller-diameter pulleys. Like the flanges, the V-guides can be notched with a radius to minimize the amount of compression on the bottom surface of the V-guide.



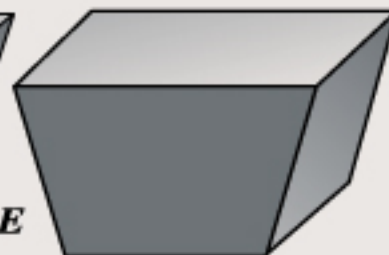
cial



Notched V-Guide



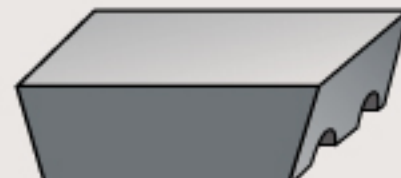
D



E



Modified D



Modified E

Splices

Mechanical Splice

A variety of mechanical fasteners are available for most any splicing situation. Mechanical splices offer economy and quick belt installation and change out.



Covered (Hidden) Splice -- Top Cover

In this splice, the mechanical fastener is hidden beneath the top cover of the belt. This creates a smooth, nearly seamless surface on the carrying side of the belt. Ideal for applications where a fine product works through a traditional mechanical fastener into the conveyor components, or where the belt is cleaned by a scraper.



Covered (Hidden) Splice -- Bottom Cover

This splice is similar to the splice above, but with the bottom cover over the mechanical fastener. Designed to protect the pulleys and rollers from the mechanical fasteners and keeps the lace from deflecting weigh rollers on gravimetric feeders.



Covered (Hidden) Splice -- Both Covers

Provides the ease of installation of a mechanical fastener with the smooth operation of a vulcanized belt. Both the product and the conveyor are protected from marring by the mechanical fasteners. This splice also prevents the lace from deflecting weigh rollers on gravimetric feeders.



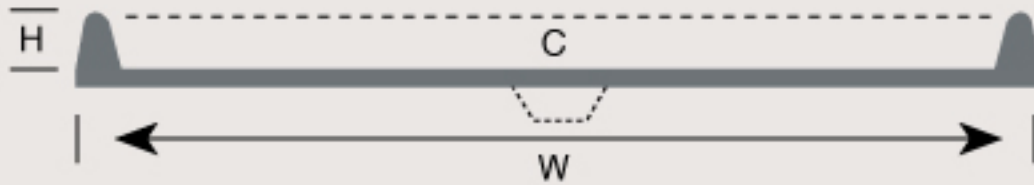
Vulcanized Endless

Belt life and performance are maximized with this splice. A vulcanized splice provides strength and dependability.



Many sizes and styles are available for immediate shipment.

Feeder Belt Order Information



Belt Type _____

V-Guide Yes No

Covers _____

V-Guide Size _____

Belt Length _____

Notched

Belt Width (W) _____

Cleat Height (C) _____

Side Flange Height (H) _____

Cleat Type _____

Notched Siped Siped & Drilled

Cleat Width _____

Splice Style _____

Cleat Spacing _____

Pulley Diameter _____

Recommended Minimum Pulley Diameters

MOLDED RUBBER FLANGES

60 Durometer Rubber Flanges

		Solid	Siped	Siped & Drilled	Notched
1/2"	(13 mm)	8" (203 mm)	7" (179 mm)	6" (152 mm)	6" (152 mm)
3/4"	(19 mm)	10" (254 mm)	7" (179 mm)	6" (152 mm)	6" (152 mm)
1"	(25 mm)	10" (254 mm)	7" (179 mm)	6" (152 mm)	6" (152 mm)
1-1/2"	(38 mm)	18" (457 mm)	14" (356 mm)	12" (305 mm)	12" (305 mm)
2"	(51 mm)	18" (457 mm)	14" (356 mm)	12" (305 mm)	12" (305 mm)

40 Durometer Rubber Flanges

1/2"	(13 mm)	4" (102 mm)
3/4"	(19 mm)	6" (152 mm)
1"	(25 mm)	8" (203 mm)
1-1/2"	(38 mm)	10" (254 mm)
2"	(51 mm)	12" (305 mm)

Please call for information on our PVC and urethane flanges!

All sales are subject to Beltservice's standard terms of sale shown on our invoice, copies of which will be provided upon request. Your order will be deemed an acceptance of those terms.

Portland, Oregon Branch

Tel: (503) 286-9965
Toll Free: (800) 347-9251
Fax: (503) 285-5380

Bensalem, Pennsylvania Branch

Tel: (215) 638-2666
Toll Free: (800) 777-1314
Fax: (215) 638-7167

Sacramento, California Branch

Tel: (916) 419-7191
Toll Free: (800) 289-2358
Fax: (916) 419-0173

Beltservice Corporation

4143 Rider Trail North
Earth City (St. Louis), MO 63045
Tel: (314) 344-8500
Toll Free: (800) 727-2358
Fax: (314) 344-8511
E-Mail: sales@beltservice.com
Internet: www.beltservice.net

Charlotte, N. Carolina Branch

Tel: (704) 949-2100
Toll Free: (800) 849-2358
Fax: (704) 949-2104

Beltservice de Mexico

Mexico City
Tel: 5 25 362-0434
Fax: 5 25 362-0261

Beltservice Canada Co.

Toronto, Ontario
Tel: (905) 565-9217
Toll Free: (877) 210-7423
Fax: (905) 565-9224

Distributed by: